

BASS TIPS

BROUGHT TO YOU BY BASSBOOKS.COM

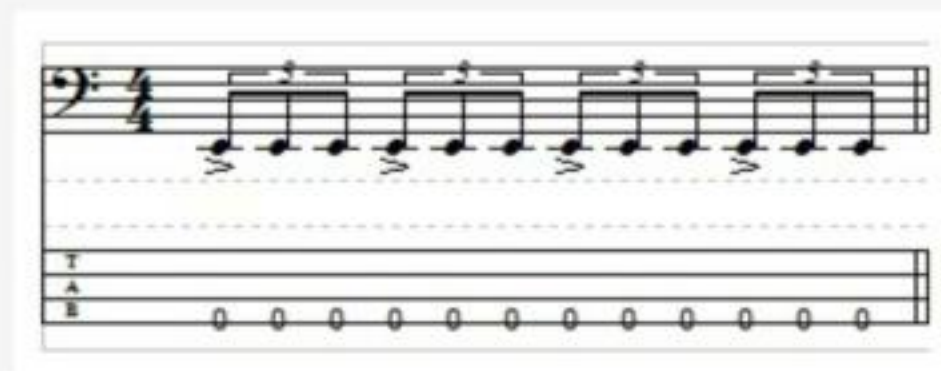
& JAIME DAVID VAZQUEZ.COM

THE SHUFFLE FEEL

When we're talking about playing a shuffle feel all we have to do is to think about the subdivision of the basic pulse into groups of three, called triplets.

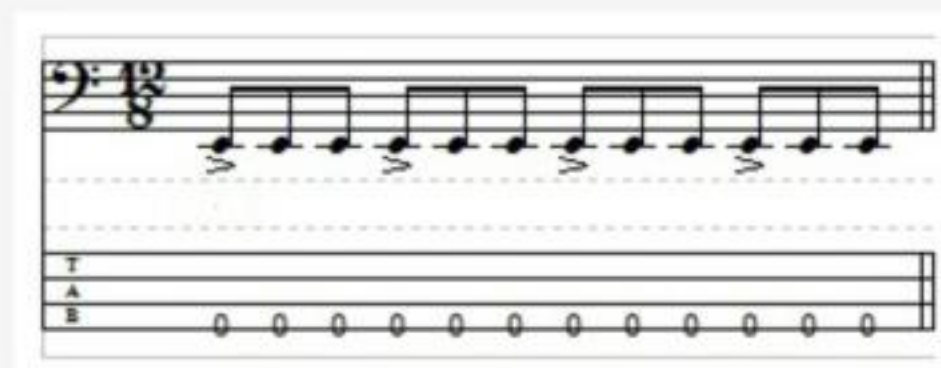
* Remember to accent the downbeat of every triplet.

Fig. 1 - Triplets in 4/4.



1 ta ta 2 ta ta 3 ta ta 4 ta ta

Fig. 2 - Triplets in 12/8.



1 ta ta 2 ta ta 3 ta ta 4 ta ta

Fig. 3 - Is an example of an eighth note groove played as a shuffle.

♩ = 100 (♩♩ - ♩♩)

4/4

Fretboard diagram (strings E, A, B):

Measure 1: E2, E2, E2, 0, 3, E2, 3, E2

Measure 2: E2, E2, E2, 0, 3, 0, 3, E2

Fig. 4 - Is the same groove written in 12/8, the standard shuffle meter.

♩ = 100

12/8

Fretboard diagram (strings E, A, B):

Measure 1: E2, E2, E2, 0, 3, E2, 3, E2

Measure 2: E2, E2, E2, 0, 3, 0, 3, E2